

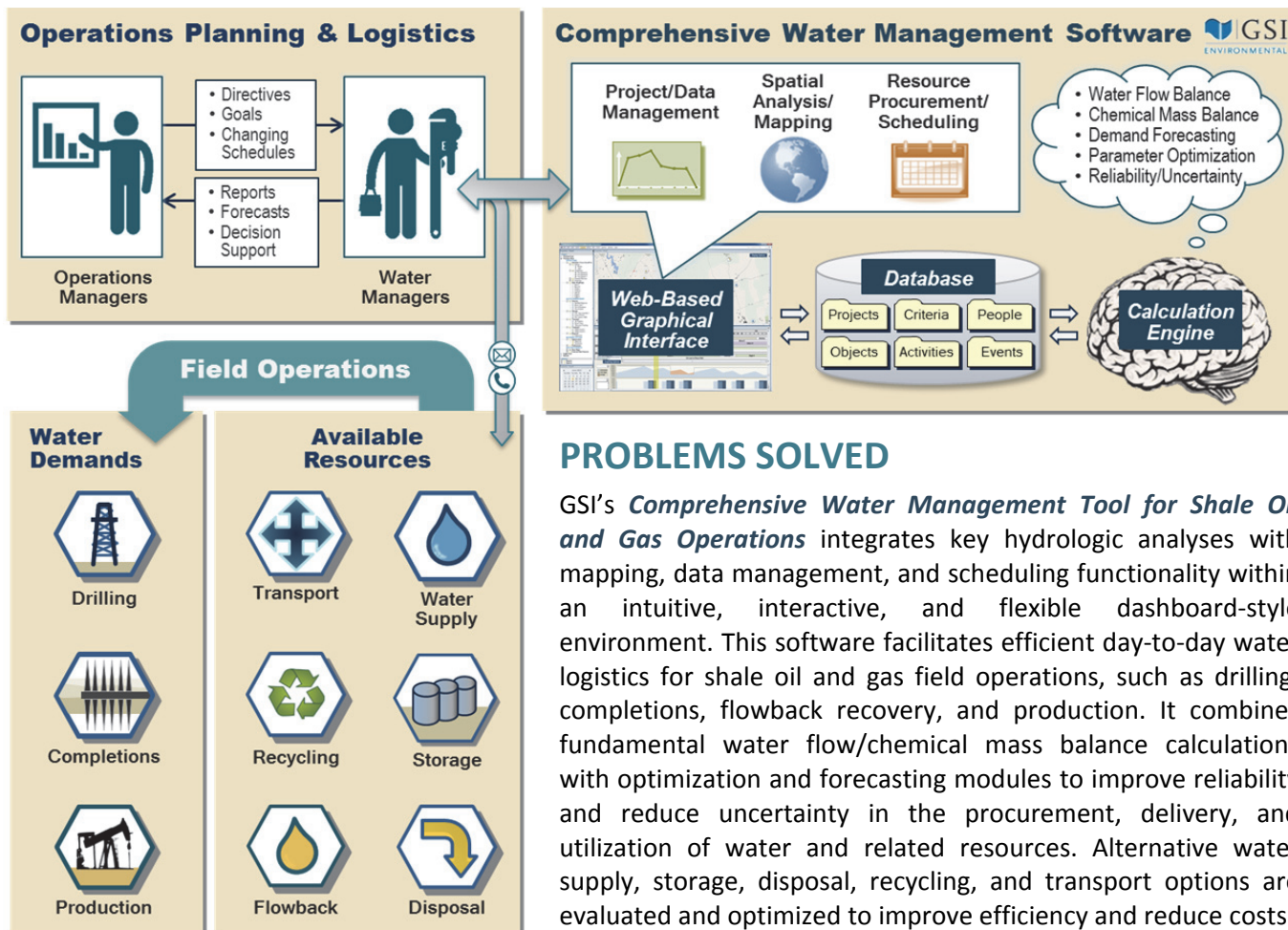
Comprehensive Water Management Tool for Shale Oil and Gas Operations



WHAT'S THE BIG DEAL?

Effective water management is essential to successful shale oil and gas operations, where *sufficient quantities of water of suitable quality must be available at the right place at the right time* to avoid costly disruptions. Although water and wastewater typically represent a small fraction of overall well development costs, compound inefficiencies in water planning, procurement, and management disproportionately inflate well development costs.

Operations managers count on water managers to address a wide range of technical and logistical challenges to achieve company goals, meet critical schedules, and respond to rapidly changing conditions. With currently available software tools, even the most adept and efficient water managers are limited in their capacity to process large volumes of information necessary to support critical decision-making and sustain efficient day-to-day water management practices.



Contact Us

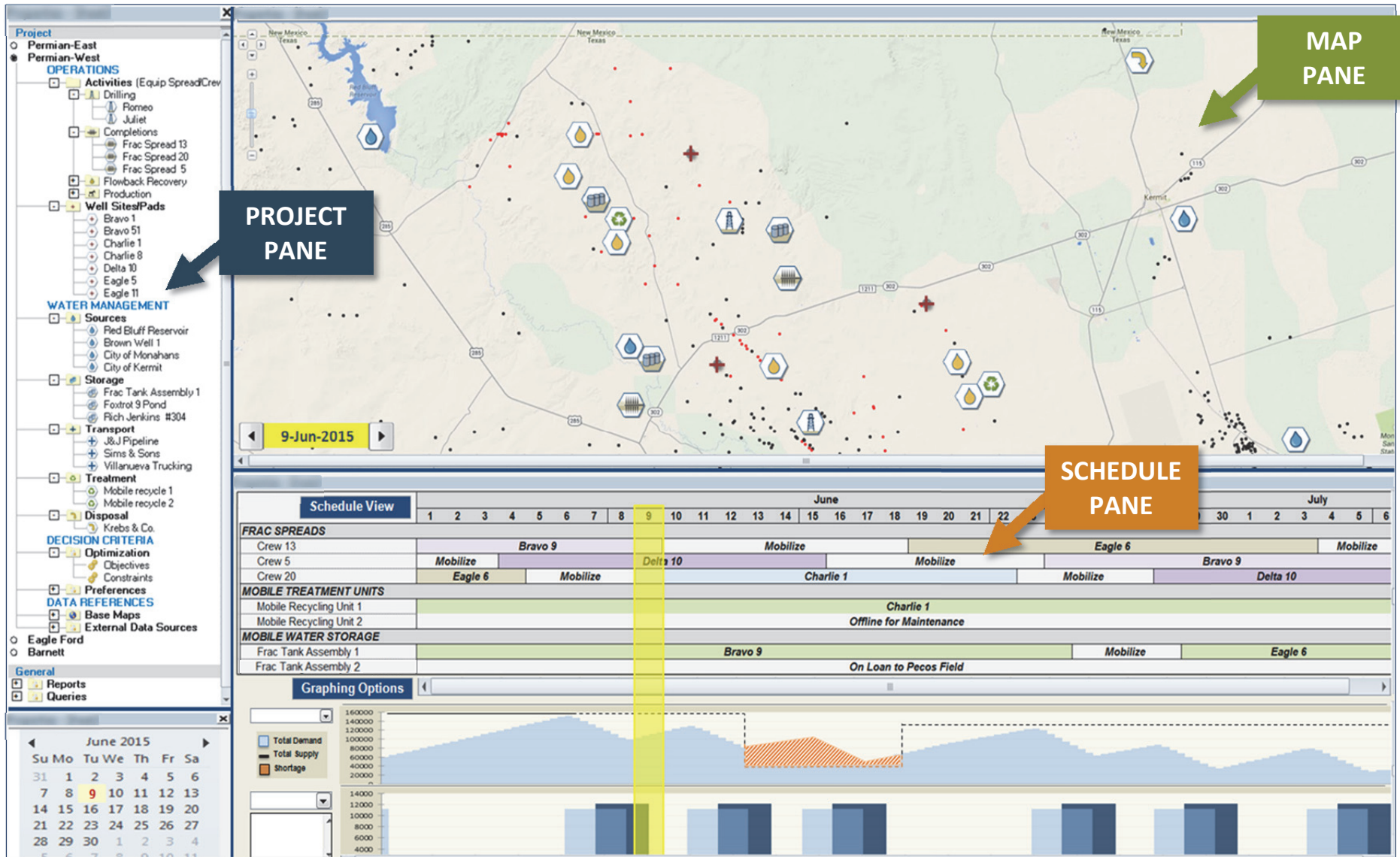
2211 Norfolk, Ste. 1000
Houston, TX 77098-4054
713.522.6300

9600 Great Hills Tr., Ste. 350E
Austin, TX 78759-5744
512.346.4474

4590 MacArthur Blvd., Ste. 285
Newport Beach, CA 92660
949.679.1070

155 Grand, Ste. 704
Oakland, CA 94612
510.463.8484

DASHBOARD LOOK & FEEL



PROJECT PANE

- **Project Management**
Manage multiple regional or basin-wide projects and site-specific evaluation scenarios.
- **Data Management**
Enter, edit, query and report project-specific activities, locations, resources, criteria, and references.

MAP PANE

- **Activity/Resource Management**
Interactively manage planned activities (water demands) and availability of required resources (water supply, storage, transport, treatment and disposal).
- **Water Transport Planning**
Identify optimal routes.

SCHEDULE PANE

- **Logistics Management**
View and manage the near-term status of water demands and resources utilization.
- **Graphical Output**
At a glance, track and compare actual past, present and projected values of user-specified metrics.